

# How to migrate Tivoli Common Reporting v3.1.\* to Cognos v.11x

(revision 1.1 June 2021)

Tivoli Common Reporting v3.1.\* is using Cognos v10. which is no longer supported by IBM Cognos.

This document describes the steps and scenario how it's possible to migrate a running Tivoli Common Reporting v3.1.\* to Cognos v11.x. For example, IBM Tivoli Monitoring OS reports can migrate to the new Cognos version, as well Cognos V11 supports newer OS releases.

This document describes how I have test it.

## Table of Contents

Prerequisites and Environment .....	2
Hardware requirements for Cognos v11 .....	2
Software packages .....	2
Software requirements for Linux Redhat .....	2
Installation of Cognos v11.....	3
Installing the DB2 ContentStore .....	7
Create the DB2 ContentStore Database .....	8
Add the ContentStore Database to the Cognos Configuration.....	9
Open the Cognos Console.....	11
Create a start script.....	12
Backup old ContentStore and Restore into Cognos v11.....	13
Backup Tivoli Common Reporting 3.1.* Content Store .....	13
Restore the ContentStore into Cognos V11.....	16
Questions and Answers .....	19
Limitations .....	20
References .....	20

*Document Owners:*  
Jens Helbig

# Prerequisites and Environment

In the current test scenario i used:

- a) Tivoli Common Reporting v3.1.\* using a remote Cognos ContentStore using DB2 v.10,1  
Cognos v10.2.2 FP10
- b) Linux Redhat 7.6 and DB2 v11.1.4FP4a for Cognos v11.0.13

## Hardware requirements for Cognos v11

About the IBM Cognos Analytics on Premises 11.1.x: Supported Software Environments.  
Please have a look at the technote <https://www.ibm.com/support/pages/node/735235>

I tested it on a RedHat (RHEL) 7.6 64bit 10 GB RAM (memory) and 80 GB HDD (disc space)

## Software packages

- a) IBM Cognos Analytics Server Limited Use 11.0.13 Linux x86 Multilingual (CNV2UML)  
*ca\_server\_var\_linuxi38664\_11.0.13.bin*
- b) IBM® DB2® Enterprise Server Edition - Restricted Use - Activation 11.1 for Linux®, UNIX and Windows® (CNB25ML)  
*v11.1.4fp4a\_linuxx64\_server\_t.tar.gz*  
*db2ese\_o.lic / sam41.lic*

The packages are available on Passport Advantage.

## Software requirements for Linux Redhat

- 1) Redhat library packages need

glibc-2.17-55.el7 or later (both i686 and x86\_64 packages)  
libstdc++-4.8.2-16.el7 or later (both i686 and x86\_64 packages)  
nspr-4.10.2-4.el7 or later (both i686 and x86\_64 packages)  
nss-3.15.4-6.el7 or later (both i686 and x86\_64 packages)  
motif-2.3.4-7.el7 or later (both i686 and x86\_64 packages)



you can use the yum command to apply the required packages like:

```
yum install motif-2.3.4-7.el7.i686 motif-2.3.4-7.el7.i686.x86_64  
yum install nss-3.36.0-7.1.el7.i686
```

```
yum install nspr-4.10.2-4.el7.i686 nspr-4.10.2-4.el7.x86_64
yum install libstdc++-4.8.2-16.el7.i686 libstdc++-4.8.2-16.el7.x86_64
yum install glibc-2.17-55.el7.i686 glibc-2.17-55.el7.x86_64
```

2) set the ulimits

modify the */etc/security/limits.conf* and check or add the following:

```
*      soft  nproc unlimited
*      hard  nproc unlimited
*      soft  nofile 8192
*      hard  nofile 8192
*      soft  stack unlimited
*      hard  stack  unlimited
```

the pic shows the setting after

```
55 #@student      hard  nproc      20
56 #@faculty      soft  nproc      20
57 #@faculty      hard  nproc      50
58 #ftp           hard  nproc      0
59 #@student      -     maxlogins  4
60
61 #added by Jens for Cognos v11 prereq and installation
62 *              soft  nproc      unlimited
63 *              hard  nproc      unlimited
64 *              soft  nofile     8192
65 *              hard  nofile     8192
66 *              soft  stack      unlimited
67 *              hard  stack      unlimited
68
69
```

save the */etc/security/limits.conf* file and then reboot your machine:

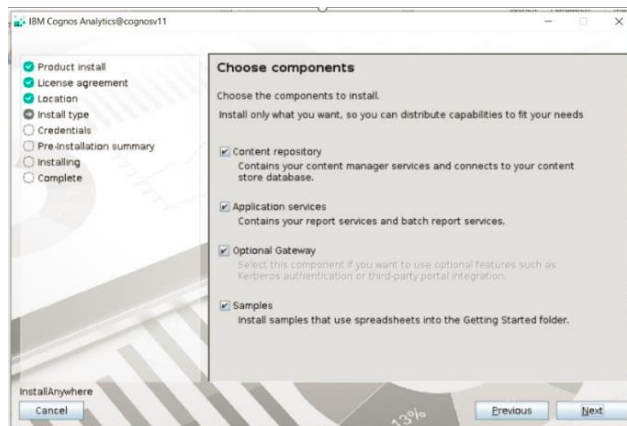
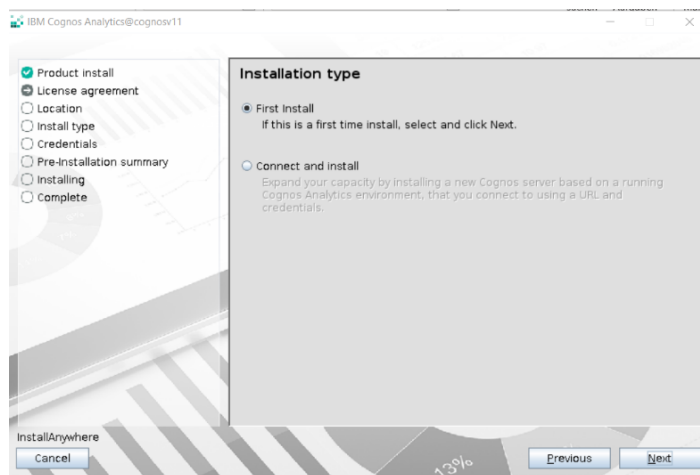
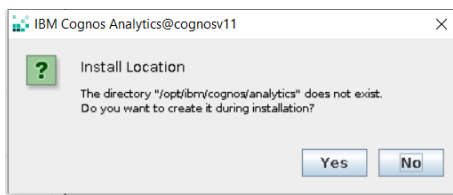
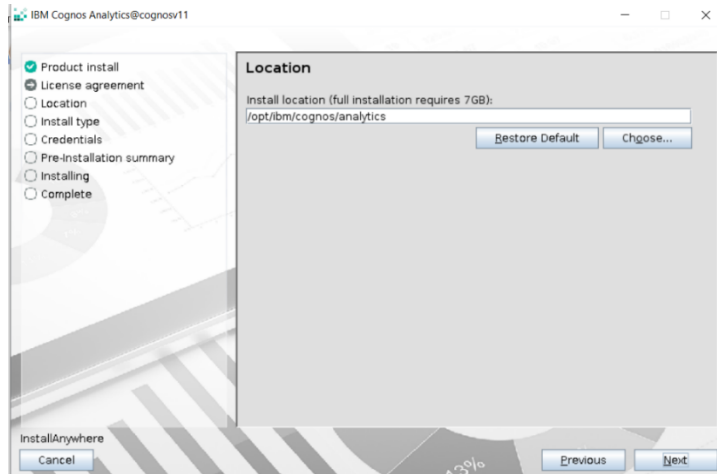
## Installation of Cognos v11

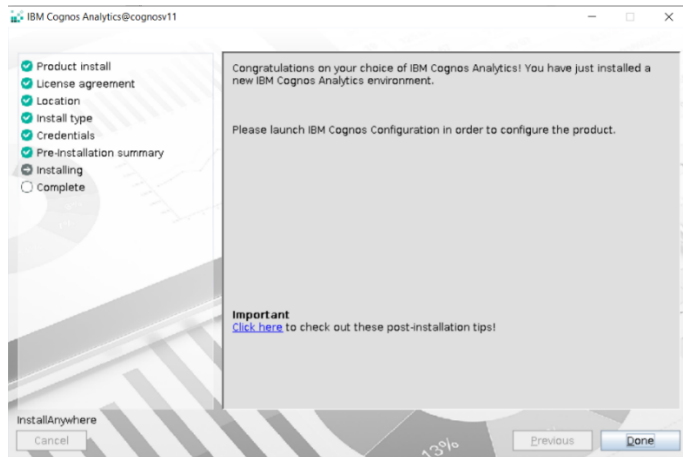
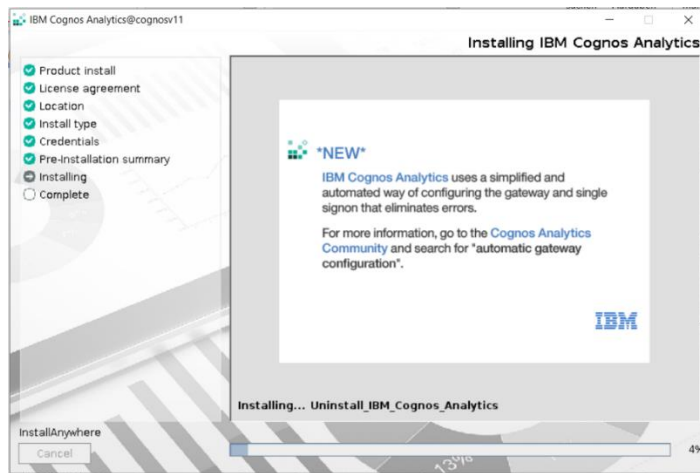
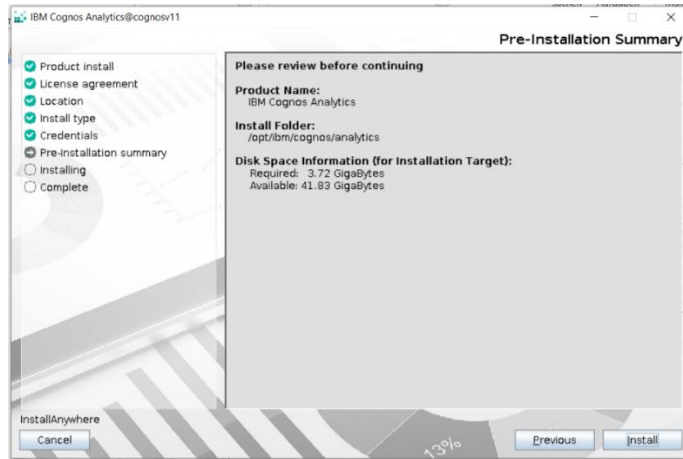
Follow the installation instructions from the IBM KnowledgeCenter

[https://www.ibm.com/support/knowledgecenter/SSEP7J\\_11.0.0/com.ibm.swg.ba.cognos.inst\\_cr\\_winux.doc/t\\_instsrvrunix.html#instsrvrUNIX](https://www.ibm.com/support/knowledgecenter/SSEP7J_11.0.0/com.ibm.swg.ba.cognos.inst_cr_winux.doc/t_instsrvrunix.html#instsrvrUNIX)

```
[root@cognosv11 Cognos]# ./ca_server_var_linuxi38664_11.0.13.bin
```







# Installing the DB2 ContentStore

Follow the installation instructions from the IBM KnowledgeCenter

[https://www.ibm.com/support/knowledgecenter/SSEPGG\\_11.1.0/com.ibm.db2.luw.admin.cmd.doc/doc/r0008889.html](https://www.ibm.com/support/knowledgecenter/SSEPGG_11.1.0/com.ibm.db2.luw.admin.cmd.doc/doc/r0008889.html)

After a successful installation of DB2, copy the DB2 driver into the Cognos path:

1. Copy **db2jcc.jar**, **db2jcc4.jar**, and **db2jcc\_license\_cu.jar** to ->  
*/opt/ibm/cognos/analytics/drivers*

```
[root@cognosv11 drivers]# pwd
/opt/ibm/cognos/analytics/drivers
[root@cognosv11 drivers]# ll
total 6368
-rw-r--r-- 1 root root 3347772 Feb 10 2017 db2jcc4.jar
-rw-r--r-- 1 root root 3160303 Feb 10 2017 db2jcc.jar
-rw-r--r-- 1 root root 1403 Feb 10 2017 db2jcc_license_cu.jar
-rwxr-xr-x 1 root root 42 Sep 20 2018 drivers.txt
[root@cognosv11 drivers]#
```

2. when you use a DB2 Warehouse database, you need to copy the **libdb2.so** as well

```
[root@cognosv11 /]# find ./ -name libdb2.so
```

```
./opt/ibm/cognos/analytics/bin64/libdb2.so
./opt/ibm/cognos/analytics/drivers/libdb2.so
./opt/ibm/db2/V11.1/lib32/libdb2.so
./opt/ibm/db2/V11.1/lib64/libdb2.so
```

3. when your DB2 Warehouse database is on a remote system, you must catalog the remote Warehouse database.

```
[db2inst1@cognosv11 ~]$ db2 "catalog tcpip node WAREHOUS remote ITM630HUBJ server 50000"
```

DB20000I The CATALOG TCPIP NODE command completed successfully.

DB21056W Directory changes may not be effective until the directory cache is refreshed.

```
[db2inst1@cognosv11 ~]$ db2 "catalog db WAREHOUS at node WAREHOUS"
```

DB20000I The CATALOG DATABASE command completed successfully.

DB21056W Directory changes may not be effective until the directory cache is refreshed.

```
[db2inst1@cognosv11 ~]$ db2 list db directory
```

```
System Database Directory
Number of entries in the directory = 2
```

```
Database 1 entry:
```

```
Database alias = WAREHOUS
```

Database name	= WAREHOUS
Node name	= WAREHOUS
Database release level	= 14.00
Comment	=
Directory entry type	= Remote
Catalog database partition number	= -1
Alternate server hostname	=
Alternate server port number	=



For sure you can still use your old ITM Warehouse Database.

More DB2 catalog command syntax can be found at:

[https://www.ibm.com/support/knowledgecenter/SSEPGG\\_11.1.0/com.ibm.db2.luw.admin.cmd.doc/doc/r0001944.html](https://www.ibm.com/support/knowledgecenter/SSEPGG_11.1.0/com.ibm.db2.luw.admin.cmd.doc/doc/r0001944.html)

[https://www.ibm.com/support/knowledgecenter/SSEPGG\\_11.1.0/com.ibm.db2.luw.admin.cmd.doc/doc/r0001936.html](https://www.ibm.com/support/knowledgecenter/SSEPGG_11.1.0/com.ibm.db2.luw.admin.cmd.doc/doc/r0001936.html)

## Create the DB2 ContentStore Database

Use the scripts from the ITCR\_3.1.\*.0\_FOR\_LINUX.tar.gz package

*ITCR\_3.1.\*.0\_FOR\_LINUX\TCRCognos\ContentStoreDatabase\TCR\_generate\_content\_store\_db2\_definition.sh*

***./TCR\_generate\_content\_store\_db2\_definition.sh CSV11DB db2inst1***

CSV11DB = new ContentStoreDB

DB2inst1 = DB2 instance user

```
[root@cognosv11 Cognos]# ls
ca_server_var_linuxi38664_11.0.13.bin db2ese_o.lic sam41.lic server_t TCR_generate_content_store_db2_definition.sh
[root@cognosv11 Cognos]# ./TCR_generate_content_store_db2_definition.sh CSV11DB db2inst1
The tcr_create_db2_cs.sql script was created
```

**su - db2inst1**

**[db2inst1@cognosv11 Cognos]\$ db2 -vtf tcr\_create\_db2\_cs.sql**



```

[db2inst1@cognosv11 Cognos]# db2 -vtf tcr_create_db2_cs.sql
CREATE DATABASE CSV11DB ALIAS CSV11DB USING CODESET UTF-8 TERRITORY US
DB20000I The CREATE DATABASE command completed successfully.

CHANGE DATABASE CSV11DB COMMENT WITH 'IBM Cognos Content Store'
DB20000I The CHANGE DATABASE COMMENT command completed successfully.

CONNECT TO CSV11DB

Database Connection Information
Database server = DB2/LINUX8664 11.1.4.4
SQL authorization ID = DB2INST1
Local database alias = CSV11DB

UPDATE DATABASE CONFIGURATION USING APPLHEAPSZ 1024 DEFERRED
DB20000I The UPDATE DATABASE CONFIGURATION command completed successfully.

UPDATE DATABASE CONFIGURATION USING LOCKTIMEOUT 240 DEFERRED
DB20000I The UPDATE DATABASE CONFIGURATION command completed successfully.

CONNECT RESET
DB20000I The SQL command completed successfully.

CONNECT TO CSV11DB

Database Connection Information
Database server = DB2/LINUX8664 11.1.4.4
SQL authorization ID = DB2INST1
Local database alias = CSV11DB

CREATE BUFFERPOOL CSV11DB_08KBP IMMEDIATE SIZE 1000 PAGESIZE 8K
DB20000I The SQL command completed successfully.

CREATE BUFFERPOOL CSV11DB_32KBP IMMEDIATE SIZE 1000 PAGESIZE 32K
DB20000I The SQL command completed successfully.

CONNECT RESET
DB20000I The SQL command completed successfully.

CONNECT TO CSV11DB

Database Connection Information
Database server = DB2/LINUX8664 11.1.4.4
SQL authorization ID = DB2INST1
Local database alias = CSV11DB

CREATE SYSTEM TEMPORARY TABLESPACE TSN_SYS_CSV11DB IN DATABASE PARTITION GROUP IBTEMPGROUP PAGESIZE 32K BUFFERPOOL CSV11DB_32KBP
DB20000I The SQL command completed successfully.

CREATE USER TEMPORARY TABLESPACE TSN_USR_CSV11DB IN DATABASE PARTITION GROUP IBMDEFAULTGROUP PAGESIZE 8K BUFFERPOOL CSV11DB_08KBP
DB20000I The SQL command completed successfully.

CREATE REGULAR TABLESPACE TSN_REG_CSV11DB IN DATABASE PARTITION GROUP IBMDEFAULTGROUP PAGESIZE 8K BUFFERPOOL CSV11DB_08KBP
DB20000I The SQL command completed successfully.

CONNECT RESET
DB20000I The SQL command completed successfully.

CONNECT TO CSV11DB

Database Connection Information
Database server = DB2/LINUX8664 11.1.4.4
SQL authorization ID = DB2INST1
Local database alias = CSV11DB

CREATE SCHEMA db2inst1 AUTHORIZATION db2inst1
DB20000I The SQL command completed successfully.

COMMENT ON SCHEMA db2inst1 IS 'IBM Cognos Content Store'
DB20000I The SQL command completed successfully.

GRANT CREATE TAB,BIND AGO,CONNECT,IMPLICIT_SCHEMA ON DATABASE TO USER db2inst1
DB21034E The command was processed as an SQL statement because it was not a
valid Command Line Processor command. During SQL processing it returned:
SQL0554N An authorization ID cannot grant a privilege or authority to itself.
SQLSTATE=42502

GRANT CREATE IN,DROP IN,ALTER IN ON SCHEMA db2inst1 TO USER db2inst1 WITH GRANT OPTION
DB21034E The command was processed as an SQL statement because it was not a
valid Command Line Processor command. During SQL processing it returned:
SQL0554N An authorization ID cannot grant a privilege or authority to itself.
SQLSTATE=42502

GRANT USE OF TABLESPACE TSN_USR_CSV11DB TO USER db2inst1
DB21034E The command was processed as an SQL statement because it was not a
valid Command Line Processor command. During SQL processing it returned:
SQL0554N An authorization ID cannot grant a privilege or authority to itself.
SQLSTATE=42502

GRANT USE OF TABLESPACE TSN_REG_CSV11DB TO USER db2inst1
DB21034E The command was processed as an SQL statement because it was not a
valid Command Line Processor command. During SQL processing it returned:
SQL0554N An authorization ID cannot grant a privilege or authority to itself.
SQLSTATE=42502

CONNECT RESET
DB20000I The SQL command completed successfully.

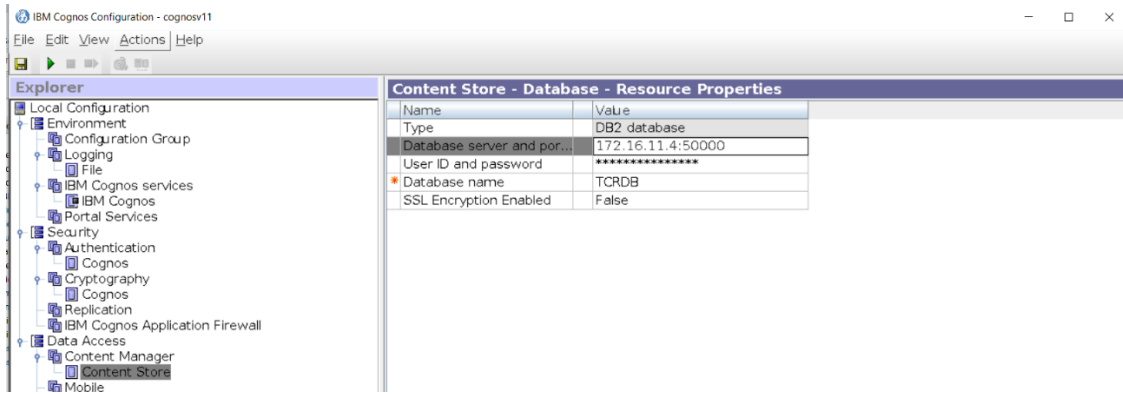
[db2inst1@cognosv11 Cognos]#

```

## Add the ContentStore Database to the Cognos Configuration

open the Cognos configuration, to add the ContentStore settings and modify the Dispatcher URI's

- 1) [root@cognosv11 bin64]# cd /opt/ibm/cognos/analytics/bin64  
 [root@cognosv11 bin64]# ./cogconfig.sh  
 Using ../jre/bin/java



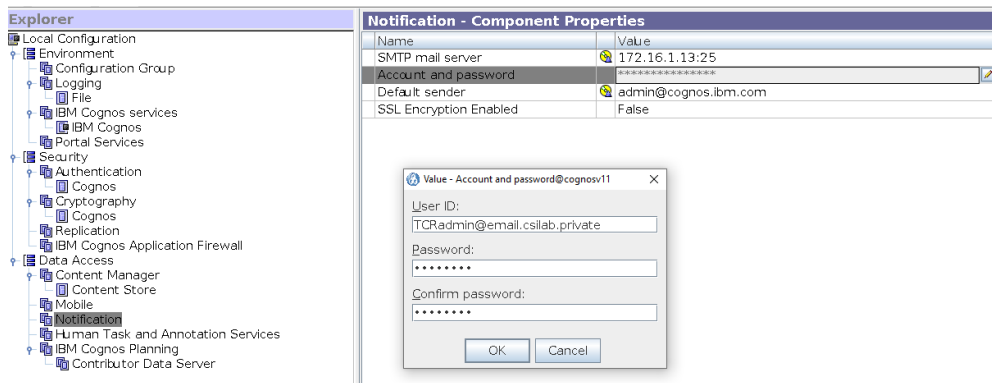
2) change the Dispatcher URI's **FROM:**

IP Version for Host Name Resolution	Use IPv4 addresses
<b>Gateway Settings</b>	
* Gateway URI	http://cognosv11:9300/bi/v1/disp
<b>Dispatcher Settings</b>	
* External dispatcher URI	http://cognosv11:9300/p2pd/servlet/dispatch
* Internal dispatcher URI	http://cognosv11:9300/p2pd/servlet/dispatch
Dispatcher password	*****
External JMX port	0
External JMX credential	*****
* Report Server execution mode	32-bit
<b>Dataset Service Settings</b>	
Dataset Service port number	9301
<b>Other URI Settings</b>	
* Dispatcher URI for external applic...	http://cognosv11:9300/bi/v1/disp
* Content Manager URIs	http://cognosv11:9300/p2pd/servlet
<b>Font Settings</b>	

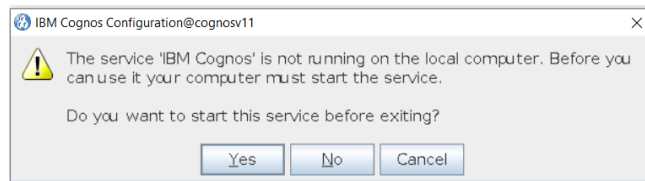
**TO** the protocol **HTTPS** and port **16311**

* Gateway URI	https://cognosv11:16311/bi/v1/disp
<b>Dispatcher Settings</b>	
* External dispatcher URI	https://cognosv11:16311/p2pd/servlet/dispatch
* Internal dispatcher URI	https://cognosv11:16311/p2pd/servlet/dispatch
Dispatcher password	*****
External JMX port	0
External JMX credential	*****
* Report Server execution mode	32-bit
<b>Dataset Service Settings</b>	
Dataset Service port number	9301
<b>Other URI Settings</b>	
* Dispatcher URI for external applic...	https://cognosv11:16311/bi/v1/disp
* Content Manager URIs	https://cognosv11:16311/p2pd/servlet
<b>Font Settings</b>	

3) Optional, you can set a SMTP server for email notification as well

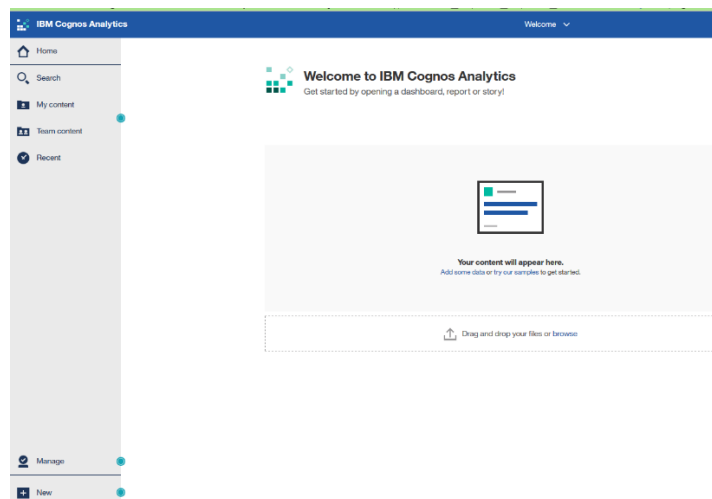


4) SAVE and EXIT the Cognos Configuration



## Open the Cognos Console

To open the Cognos Console in your Webbrowser use the URL <https://<CognosServerIP-or-hostname>:16311/bi/>



# Create a start script

Unfortunately, there is a problem to load the db2 driver to get the DB2 Datasource successful to connect. Therefore, I created an own start script, which is loading the necessary driver and starting Cognos Server.

1) created an own script called **cogstart.sh** with the following content:

```
----- script begin -----
#!/bin/bash
# Cognos Start script
# Jens 23/09/2019
COGNOS_HOME=/opt/ibm/cognos/analytics/
PATH=$PATH:$COGNOS_HOME/bin64:$COGNOS_HOME/bin
LD_LIBRARY_PATH=$COGNOS_HOME/bin64:$COGNOS_HOME/bin:$DB2_HOME/lib32:$COGNOS_H
OME/bin64:$COGNOS_HOME/bin

DB2_HOME=/home/db2inst1/sqllib
DB2INSTANCE=db2inst1
DB2LIB=$DB2_HOME/lib

JAVA_HOME=$COGNOS_HOME/jre
LANG=en_US.UTF-8

export DB2_HOME DB2INSTANCE DB2LIB COGNOS_HOME PATH LD_LIBRARY_PATH
JAVA_HOME LANG

cd $COGNOS_HOME/bin64
./cogconfig.sh -s
----- script end -----
```

2) Start Cognos now with **./cogstart.sh**  
Stop Cognos with **./cogconfig.sh -stop**

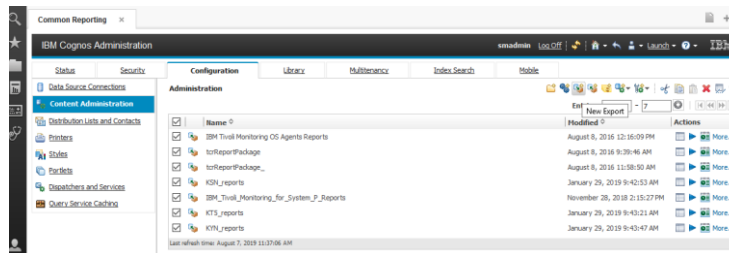


When you want to start Cognos normal, use “**./cogconfig.sh -s**”, but this will not load the DB2 driver!

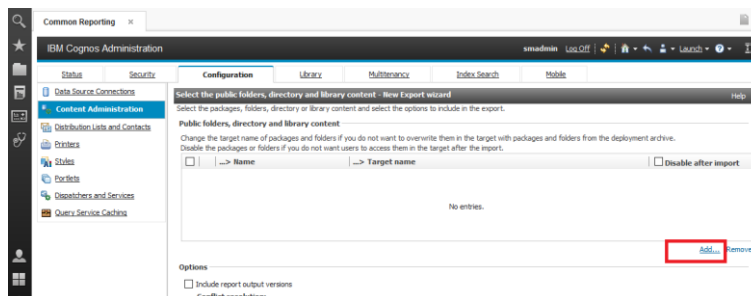
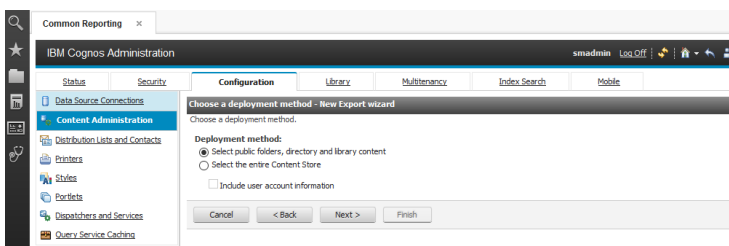
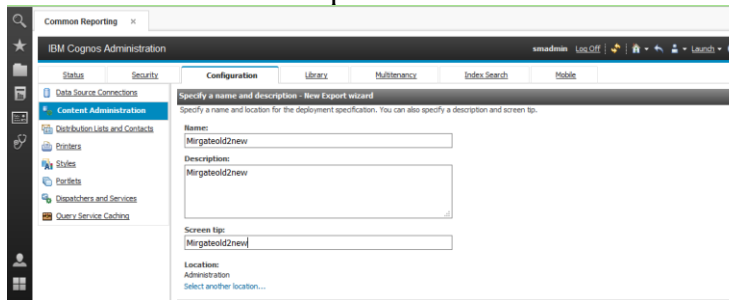
# Backup old ContentStore and Restore into Cognos v11

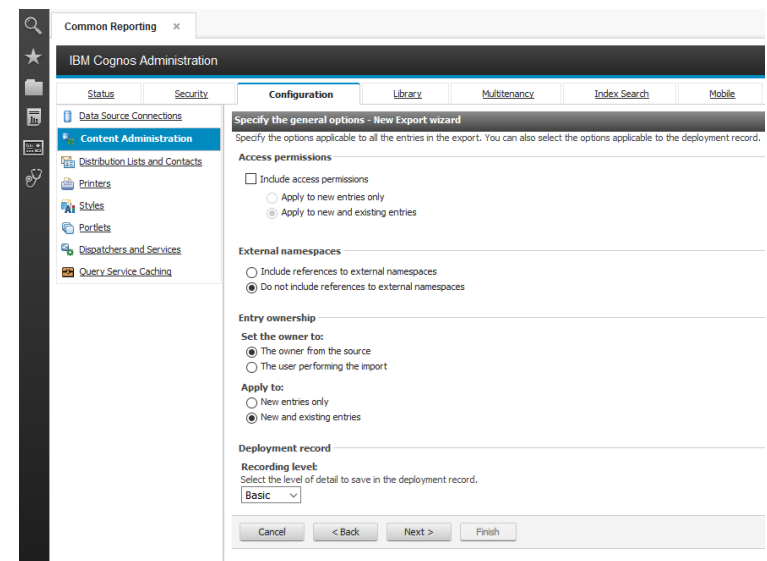
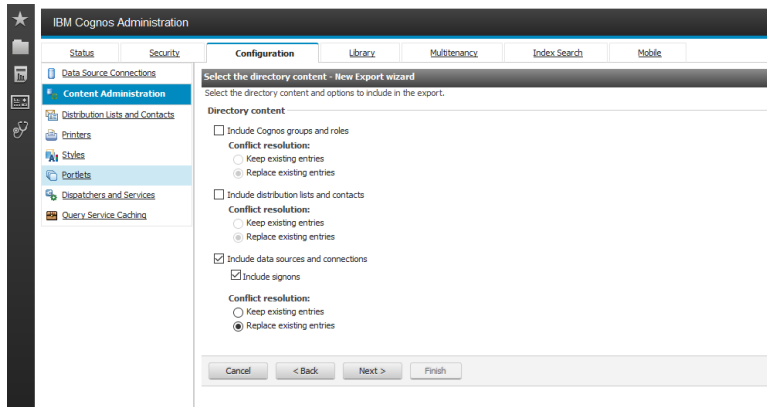
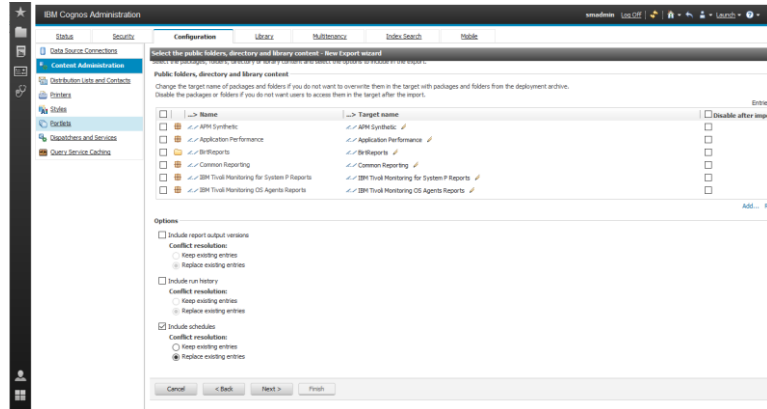
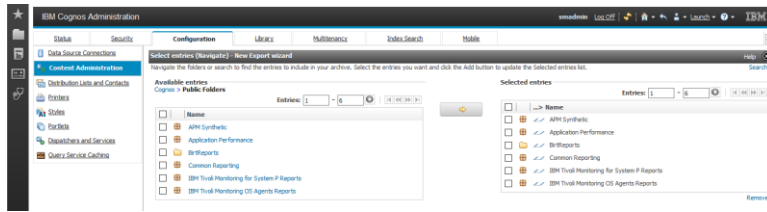
## Backup Tivoli Common Reporting 3.1.\* Content Store

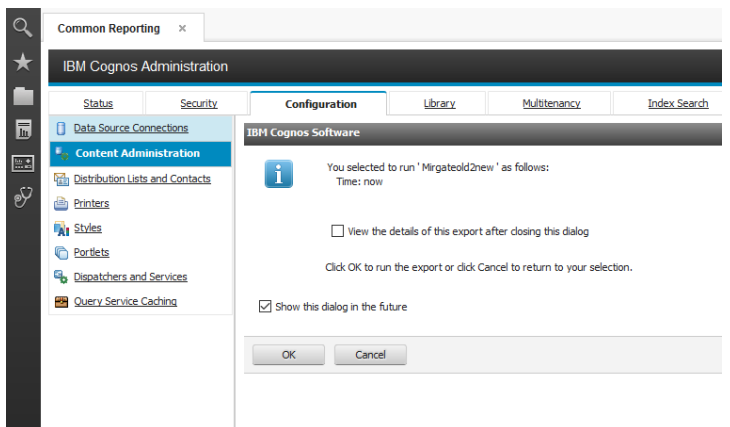
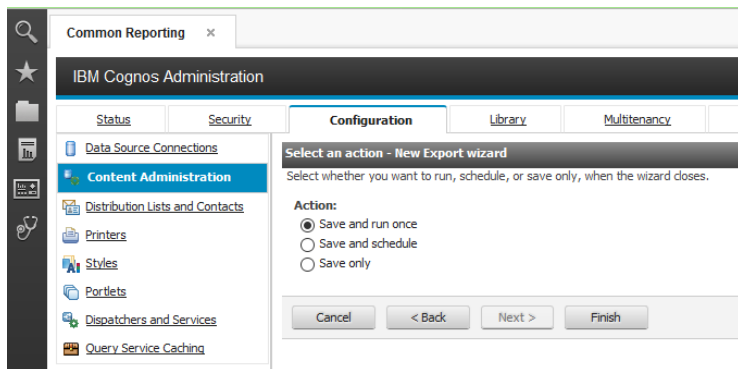
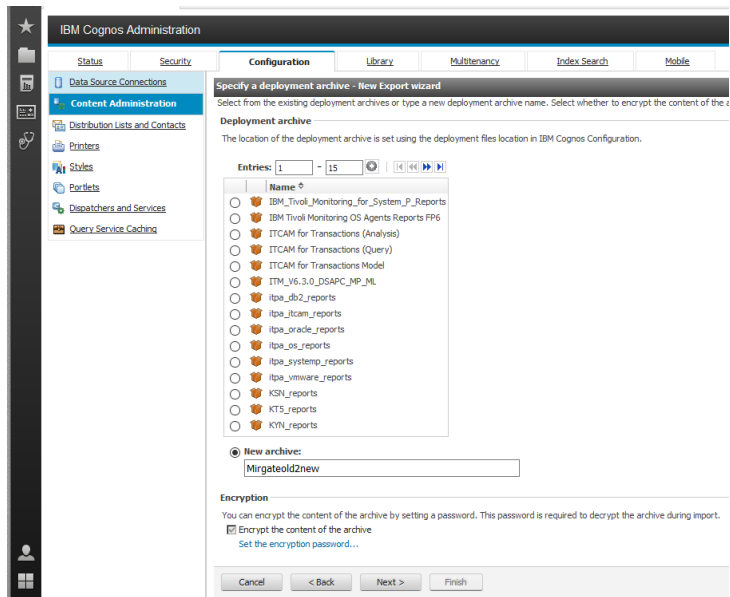
In the DASH open the Cognos Administration, and run a “New Export” from the Configuration tab -> Content Administration



Now follow the process to create a New Export







The Export of the ContentStore is stored on the TCR System under:  
*/opt/IBM/JazzSM/reporting/cognos/deployment*

```

[root@JazzSMJ cognos]# cd deployment/
[root@JazzSMJ deployment]# ll
total 778924
-rw-rw-r-- 1 root root 3526563 Feb 21 2013 IBM_Tivoli_Monitoring_for_System_P_Reports.zip
-rw-rw-r-- 1 root root 18089975 Dec 1 2015 IBM_Tivoli_Monitoring_OS_Agents_Reports_FP6.zip
-rw-rw-r-- 1 root root 984226 Jul 20 2016 ITCAM_for_Transactions_(Analysis).zip
-rw-rw-r-- 1 root root 1012339 Jul 16 2015 ITCAM_for_Transactions_Model.zip
-rw-rw-r-- 1 root root 1073566 Jul 16 2015 ITCAM_for_Transactions_(Query).zip
-rwxrwxr-- 1 root root 709903885 Jan 29 2019 ITM_V6.3.0_DSAPC_MP_ML.zip
-rw-rw-r-- 1 root root 366408 Aug 13 2013 itpa_db2_reports.zip
-rw-rw-r-- 1 root root 346341 Aug 13 2013 itpa_itcam_reports.zip
-rw-rw-r-- 1 root root 402886 Aug 13 2013 itpa_oracle_reports.zip
-rw-rw-r-- 1 root root 517089 Aug 13 2013 itpa_os_reports.zip
-rw-rw-r-- 1 root root 404175 Aug 13 2013 itpa_system_reports.zip
-rw-rw-r-- 1 root root 328314 Aug 13 2013 itpa_vmware_reports.zip
-rwxrwxr-- 1 root root 177074 Jan 29 2019 KSN_reports.zip
-rwxrwxr-- 1 root root 176651 Jan 29 2019 KT5_reports.zip
-rwxrwxr-- 1 root root 4379899 Jan 29 2019 KYN_reports.zip
-rw-r--r-- 1 root root 62549397 Aug 7 11:49 Mirgateold2new.zip
-rw-rw-r-- 1 root root 353206 Mar 7 2013 tbsm01-reports.zip
-rw-rw-r-- 1 root root 183219 Mar 7 2013 TBSM_History_Agent.zip
-rw-rw-r-- 1 root root 42415 Nov 24 2018 tcrReportPackage.zip
[root@JazzSMJ deployment]#

```

## Restore the ContentStore into Cognos V11

- 1) copy the “old” ContentStore export to the new Cognos V11 system and save it under the Cognos v11 deployment folder:

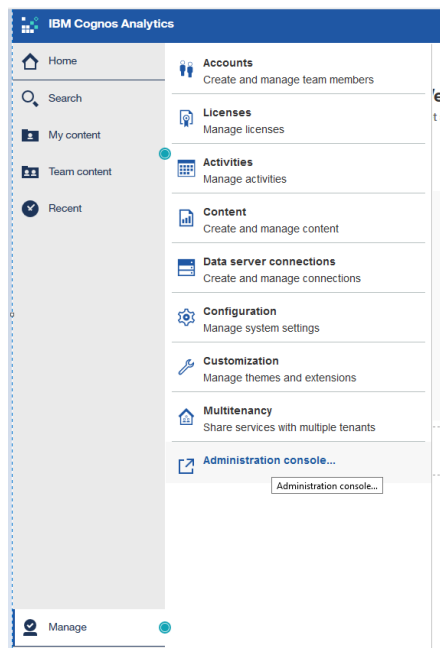
```
[root@cognosv11 deployment]# cp /mnt/Jens/Cognos/Mirgateold2new.zip /opt/ibm/cognos/analytics/deployment
```

```

[root@cognosv11 deployment]# cp /mnt/Jens/Cognos/Mirgateold2new.zip /opt/ibm/cognos/analytics/deployment
[root@cognosv11 deployment]# ll
total 125204
-rw-r--r-- 1 root root 62549397 Aug 7 11:58 Mirgateold2new.zip
-rw-rw-r-- 1 root root 65658253 Sep 21 2018 Samples_for_Install_var_11_0_13.zip
[root@cognosv11 deployment]#

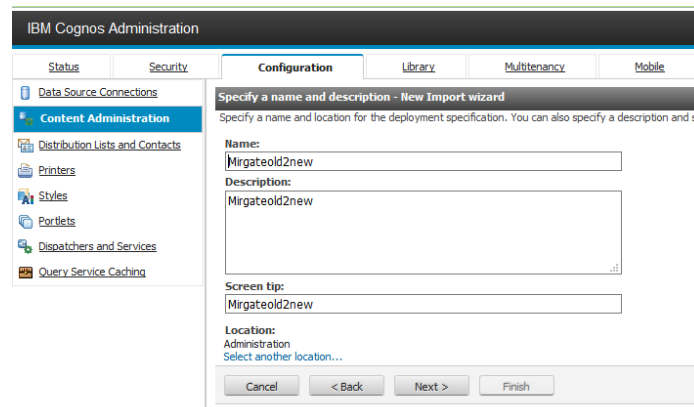
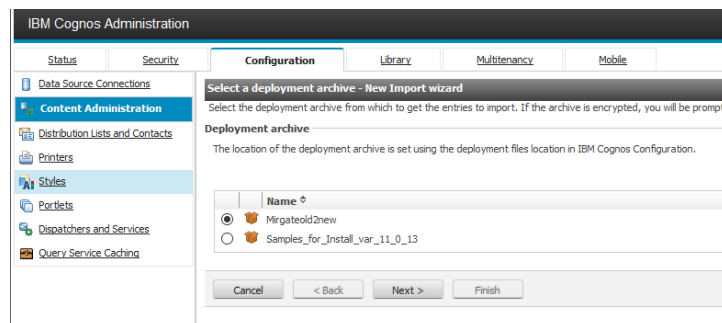
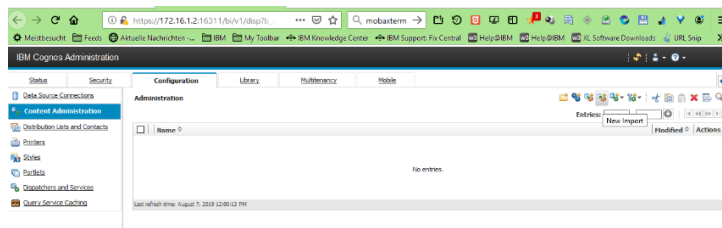
```

- 2) access your Cognos BI using the Webbrowser URL and open the Cognos Administration under Cognos V11

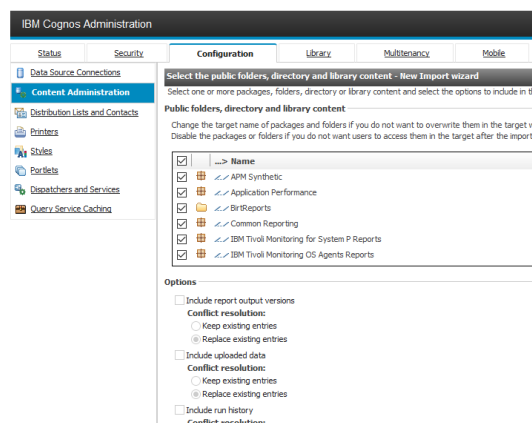


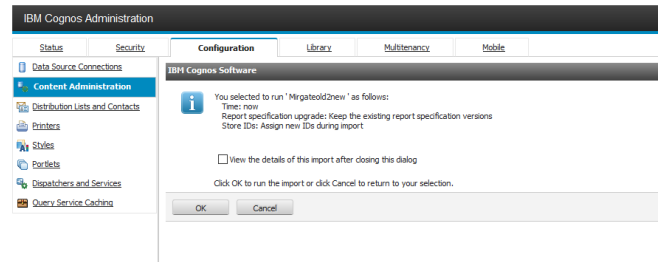
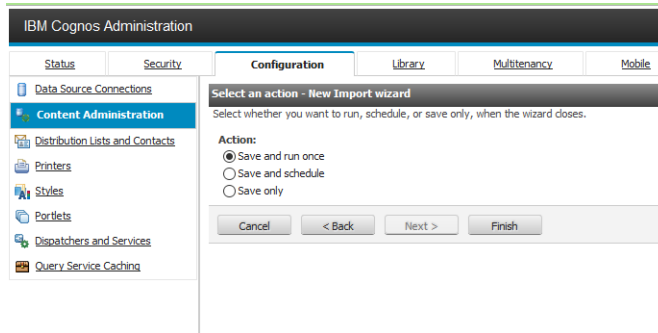


The Cognos Administration V11 looks like Cognos V10, so run from the Cognos Administration, a “New Import” from the Configuration tab -> Content Administration, and select your ContentStore from your exported package



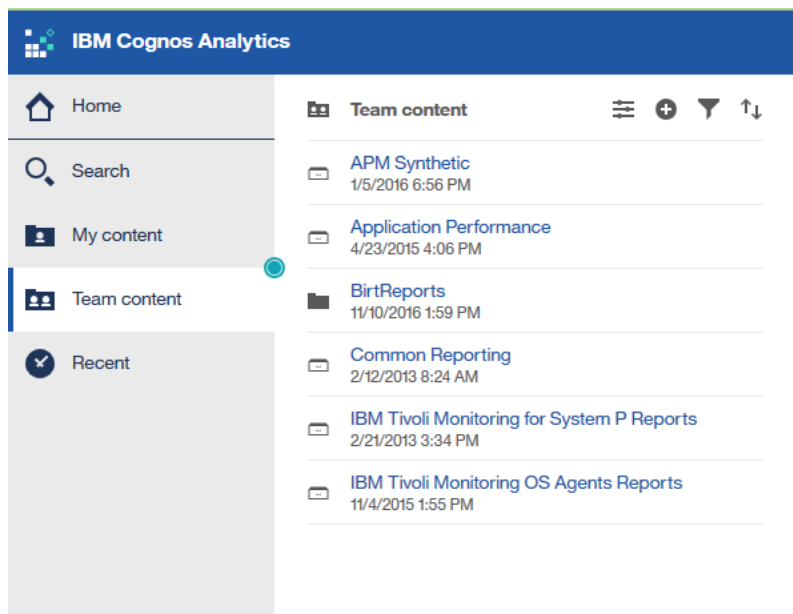
### 3) Select what you want to Import





The Import has now finished. Depending on your import selection you should see the “old” reports and Datasource settings. Please verify if the Datasource connection is successful. You can test the Datasource connection like under TCR v3.1.\*

4) open your Cognos BI console from the Webbrowser. The Team Content should now list all your reports from the previous Tivoli Common Reporting v3.1.\*



# Questions and Answers

Q1) *I have problems to install Cognos V11 or run into trouble with Cognos V11. Who can help me?*

A1) Please open an IBM Salesforce case and report a Cognos issue. The IBM Cognos support will help.

Q2) *Can I use my old ContentStore from TCR 3.1.\*?*

A2) I tried to use my old Cognos V10 ContentStore and ran into trouble. So my recommendation is to setup a new ContentStore for Cognos V11. The advantage of this, you can use and run your reports on both environments, TCR v3.1.\* and Cognos V11. After a test phase, you can shut down the old environment.

Q3) *During the migration can I also migrate my ContentStore Database from DB2 to Oracle?*

A3) The technote [How to migrate a Cognos ContentStore Database to Oracle](#) describes the scenario under Tivoli Common Reporting V3.1.\* and should work for Cognos V11, too. Please have a look at the supported ContentStore databases under Cognos V11.

About supported databases please have a look:

[Cognos 11 Supported Software Environments](#)

Q4) *Can I install / upgrade my running Tivoli Common Reporting V3.1.\* with the new Cognos V11?*

A4) No, you can not. Cognos V11 is a standalone application and does not use Jazz for Service Management.

Q5) *If you tested on Cognos V11.0.13, can you use or upgrade to Cognos IBM Cognos Analytics 11.1.5.? Then, will your reports still work?*

A5) On my tests, I updated to IBM Cognos Analytics 11.1.5.0, and my reports are still working

Q6) *With Cognos V11 is there a Cognos Frameworkmanager available?*

A6) Yes there is, contact the IBM Cognos Team about support. can you provide a link to Cognos Frameworkmanager?

Q7) *Can I install in the same folder as a 10.2.2 (or earlier) version of Cognos BI?*

A7) No. You must install IBM Cognos Analytics in a separate folder which does not contain a prior version of Cognos 10 Business Intelligence.

You can, however install over top of an 11.0.x Cognos Analytics installation.

# Limitations

Note: TCR features which wont work on Cognos V11.x:

1. Single sign on from “Dashboard Application Services Hub” (DASH) to Cognos V11.x
2. Command line interface commands
3. Birt reports

# References

## **Downloading IBM Cognos Analytics 11.0.3.0**

<https://www.ibm.com/support/pages/downloading-ibm-cognos-analytics-11030>

## **Downloading IBM Cognos Analytics 11.1.5.0**

<https://www.ibm.com/support/pages/downloading-ibm-cognos-analytics-11150>

## **Cognos Analytics on the IBM KnowledgeCenter**

<https://www.ibm.com/support/knowledgecenter/SSEP7J>

## **IBM Cognos Analytics 11.0.0 Supported Software Environments**

<https://www.ibm.com/support/pages/ibm-cognos-analytics-1100-supported-software-environments>

## **IBM® Db2 Version 11.1 Knowledge Center**

[https://www.ibm.com/support/knowledgecenter/SSEPGG\\_11.1.0/com.ibm.db2.luw.welcome.doc/doc/welcome.html](https://www.ibm.com/support/knowledgecenter/SSEPGG_11.1.0/com.ibm.db2.luw.welcome.doc/doc/welcome.html)